



ZHEJIANG YIDA
EXPRESS ELEVATOR CO.,LTD

FUJI YIDA



Sino-Japanese cooperative Zhejiang Yida Express Elevator Co., Ltd. is located in Nanxun, Zhejiang Province, where is a famous ancient town of Changjiang Delta, where is the economic and financial centre of China, and it is only 100 kilometers away from Shanghai. Our company is a production enterprise of elevator, escalator, moving walk and the components with brand name "FUJI YIDA" which has the ability of design, manufacture, sale, installation and maintenance since it was established in the year 1992. Now we already got the Grade A certificate of "the special equipment (elevator) manufacturer license of People's Republic of China" awarded by China government "General Bureau of National Quality Surveillance Inspection and Quarantine". Furthermore, the product quality has passed authentication of ISO9001 quality management system, and now we are the member of Chinese Elevator Industry Association and the leadership of Zhejiang Hu zhou Elevator Industry Association.

We successfully got the technical cooperation with FUJITSU LIMITED in 2003, and we adopted their 32 bit microprocessor main board which is specially designed for elevator, in order to improve the performance of FUJI YIDA elevator in reliability, safety and comfort, we also developed world advanced intellectual wireless long-distance monitoring system which can further guarantee the clients no worry.

In the new era, our company follows FUJI YIDA spirit, "solidarity, striving, practice, progress", takes management conception of "serve clients, contribute to the society and develop ourselves with grown technique and reliable production quality", and puts forward the strategy tenet that "take high quality and service as the basis, continuously popularize "FUJI YIDA" brand; take diversification and technicalization of product as the development means, and cater to the requirements better which are from different client"; we are willing to make safe, reliable and high-quality products for clients with all our hearts, and our advanced management, well-knit production basis and perfect quality guarantee system.



FUJI YIDA

CONTENTS

Production shop	01-02
Key components	03-04
Cabin of passenger series elevator	05-08
Cabin of bed elevator	09
Cabin of sightseeing elevator	10-11
Landing door series	12
Ceiling series	13
Villa elevator	14
Ceiling series for villa elevator	15
Car operation panel, hall operation panel	16
Handrails, Floorings, Colours	17
Cabin of freight elevator	18
Cabin of automobile elevator	19
Hydraulic elevator	20
Landing door	21
Escalator series	22-23
Moving series	24
Intellectual design	25
Construction parameters	26-33



Fast Safe Concord

01-02



FUJI YIDA

Production Shop





Key components

The all computerized data network system fully demonstrate the intelligence of humanity, with the function more perfect and flexible. The 32 bit double CPU and the inter-monitor of principal & subordinate CPU have increased the speed of data processing in a great extent. The highly intellectual micro-computer module inside the system implements the most secure, accurate and effective management and control to the elevator running.





VVVF door operator

Use advanced VVVF door operator, speed of opening/closing door can be adjusted freely, door system is designed cleverly. Which performance is smooth, quiet.



Geared traction machine(VVVF)

Geared traction machine has reliable performance during past decades. Because of its convenience and high quality, it becomes a good choice for general residence and building.



Gearless traction machine(VVVF)

Advanced permanent magnetic synchronous gearless traction technology and device greatly upgrades the driving technology of elevator and leads the elevator into an economic and environmental protection times. Due to its compact size and high efficiency, it is popularly adopted in high building or machine roomless elevator.



Cabin of passenger series elevator

Fast Safe Concord
05-06


FUJI YIDA



YD-02 optional style

Ceiling: Mirror finished stainless steel Frame with acrylic top panel, down lights

Car wall: Mirror etched stainless steel

Car door: Hairline stainless steel

Flooring: PVC

Cop,Hop: Hairline stainless steel panel



YD-01 F optional style

Ceiling: Titanium plated stainless steel,Frame with acrylic

Car wall: Titanium plated stainless steel,mirror etched

Car door: Titanium plated stainless steel,mirror etched

Flooring: PVC

Cop,Hop: Titanium plated stainless steel



EX-01 standard style

Ceiling: Hairline stainless steel base plate is supplemented by rectangular hollow and transparent arched white

Car wall: Hairline stainless steel

Flooring: PVC

Car door: Hairline stainless steel

The pictures are plotted by computer and are likely somewhat different from the actual products.



EX-02 optional style

Ceiling: Mirror stainless steel frame with middle image line transparent board
 Car wall: Mirror stainless steel, hairline etched stainless steel
 Handrail: Stainless steel flat
 Flooring: PVC



EX-03 optional style

Ceiling: Stainless frame with acrylic
 Car wall: Mirror etched stainless, hairline stainless steel
 Handrail: Stainless steel tube
 Flooring: PVC



YD-03 optional style

Ceiling: middle with image roof, side of stainless steel frame with down lights.
 Car wall: Titanium plated stainless steel etched finish.
 Flooring: PVC



YD-04 optional style

Ceiling: Wide vaulted white transparent light board for soft illumination design

Car wall: Center board is made of mirror finish, etching finish, auxillary board is hairline stainless steel

Flooring: PVC



EX-04 optional style

Ceiling: Middle with image roof,side of stainless frame with tube lamp for soft illumination design

Car wall: Mirror stainless steel,titanium plated

Flooring: PVC



YD-05 optional style

Ceiling: Wide vaulted white transparent light board for soft illumination design

Car wall: Ti-plated finish, mirror finish, etching finish, hairline finish.

Flooring: PVC

The pictures are plotted by computer and are likely somewhat different from the actual products.



YD-06 optional style

Ceiling: Wide vaulted white transparent light board for soft illumination design

Car wall: Mirror finish, etching finish, hairline finish.

Flooring: PVC



EX-05 optional style

Ceiling: mirror stainless steel and energy-saving light in the middle

Car wall: Titanium plated hairline stainless steel, mirror stainless steel

Flooring: PVC



EX-10 optional style

Ceiling: Wide vaulted white transparent light board for soft illumination design

Car wall: Mirror finish, etching finish, hairline finish.

Flooring: PVC

Cabin of bed elevator

Fast Safe Concord

09-10



FUJI YIDA



EX-B01 standard style

Ceiling: Hairline stainless steel, Vaulted light board with acrylic

Car wall: Hairline stainless steel

Handrail: Flat handrail stainless steel

Flooring: PVC



EX-B02 optional style

Ceiling: Painted steel with decorative lighting

Car wall: Painted steel

Handrail: Stainless steel tube

Flooring: PVC

Cabin of sightseeing elevator



YD-Q010 standard style

Upper and lower guard: Steel plate spraying with Ti-plated stainless steel board
Sightseeing wall: Three glue glass of safety clamp
Decorative ceiling: Multi-layer glisten board with tube lamp
Car wall: Stainless steel hairline board
Flooring: PVC floor board



YD-Q009 optional style

Upper and lower guard: Steel plate spraying with Ti-plated stainless steel board
Sightseeing wall: Three glue glass of safety clamp
Decorative ceiling: Multi-layer glisten board with tube lamp
Car wall: Stainless steel hairline board
Flooring: PVC floor board



YD-Q005A optional style

Upper and lower guard: Steel sheet, baked finish, acrylic lamp decoration
Sightseeing wall: Laminated safety glass(3 pieces), thickness 5+5
Decorative ceiling: Steel sheet, baked finish, acrylic topplate, tube lamp
Car wall: Hairline stainless steel
Handrail: $\phi 38$ stainless steel tube
Floor: PVC floor board
Option: Water-cut parquet floor and glass car door

The pictures are plotted by computer and are likely somewhat different from the actual products.

Cabin of sightseeing elevator

Fast Safe

Concord

11-12



FUJI YIDA



YD-Q002 optional style

Upper and lower guard: Steel plate spraying
Sightseeing wall: Glue glass of safety clamp
Decorative ceiling: Multi-layer glisten board, organic lamp for illumination design
Car wall: Glue glass of safety clamp
Handrail: Stainless steel hairline board
Flooring: PVC



YD-Q012 optional style

Upper and lower guard: painted steel with decorative light
Glass walls: Laminated safety glass
Decorative ceiling: Mirror stainless steel, acrylic light
Car wall: Hairline stainless steel
Handrail: Stainless steel tube
Flooring: PVC



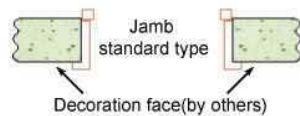
YD-Q003 optional style

Upper and lower guard: Steel sheet, baked finish, acrylic lamp decoration
Sightseeing wall: Laminated safety glass (3 pieces), thickness 5+5
Decorative ceiling: Steel sheet, baked finish, acrylic top plate, tube lamp
Car wall: Hairline stainless steel
Handrail: Stainless steel tube
Flooring: PVC

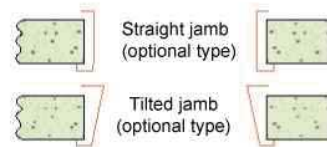
Landing door series



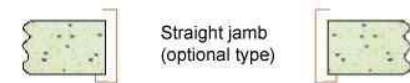
Landing door, narrow jamb (standard)



Wide jamb(optional)



Wide jamb with transom(optional)



Item	Standard	Optional	Item	Standard	Optional	Item	Standard	Optional
Landing door	Hairline stainless steel	Mirror stainless steel, painted steel plate Hairline stainless steel etching, Mirror stainless steel etching Stainless steel titanium plated, Stainless steel titanium plated etching	Landing door	Hairline stainless steel	Mirror stainless steel, painted steel plate Hairline stainless steel etching, Mirror stainless steel etching Stainless steel titanium plated, Stainless steel titanium plated etching	Landing door	Hairline stainless steel	Mirror stainless steel, painted steel plate Hairline stainless steel etching, Mirror stainless steel etching Stainless steel titanium plated, Stainless steel titanium plated etching
Narrow jamb (Standard)	Hairline stainless steel	Mirror stainless steel Stainless steel titanium plated	Wide jamb (optional)	Hairline stainless steel	Mirror stainless steel Stainless steel titanium plated	Wide jamb (optional)	Hairline stainless steel	Mirror stainless steel Stainless steel titanium plated

The pictures are plotted by computer are likely somewhat different from the actual products.

Ceiling series



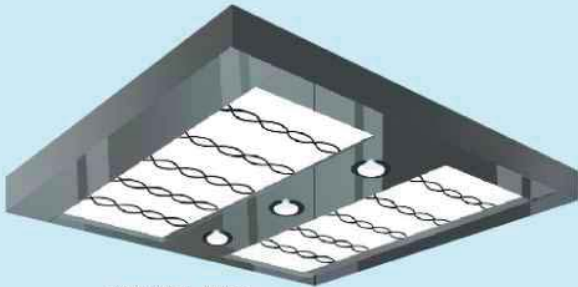
YD ET-J020



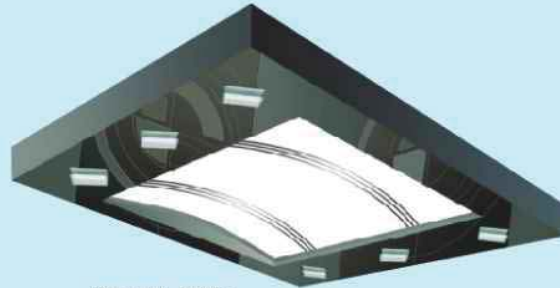
YD ET-J021



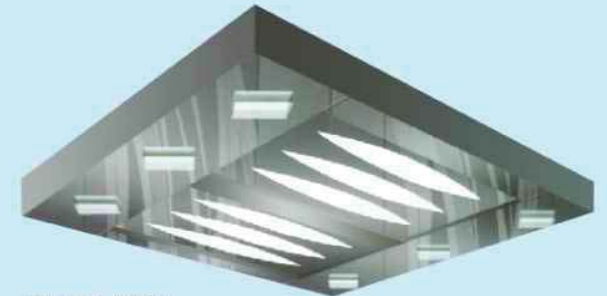
YD ET-J022



YD ET-J023



YD ET-J024



YD ET-J025



EX-J025



EX-J026



EX-J027

The color of frame is change-able.
The pictures are plotted by computer are likely somewhat different from the actual products.

Villa elevator



EX-V01

Ceiling: Hairline stainless steel frame,
Tube light
Ventilation: Axial fan
Car wall: Painted steel
Flooring: PVC
Colors: EX-JX06



EX-V02

Ceiling: Hairline stainless steel frame,
Tube light
Ventilation: Axial fan
Car wall: Hairline stainless steel
Flooring: PVC



EX-V03 optional style

Ceiling: Mirror finished stainless steel,
frame, acrylic
Ventilation: Axial fan
Car wall: Full sightseeing glass, mirror
finished stainless steel frame.
Flooring: PVC



EX-V05 optional style

Ceiling: Hairline stainless steel frame,
Tube light
Ventilation: Axial fan
Car wall: Hairline, stainless steel
with mirror stainless steel in middle.
Flooring: PVC

Ceiling series for villa elevator

Fast
Safe
Concord

15-18



FUJI YIDA



EX-HD001
Painted steel frame. squareness in middle
concise acrylic lighting.



EX-HD002
Hairline stainless steel frame, Tube light



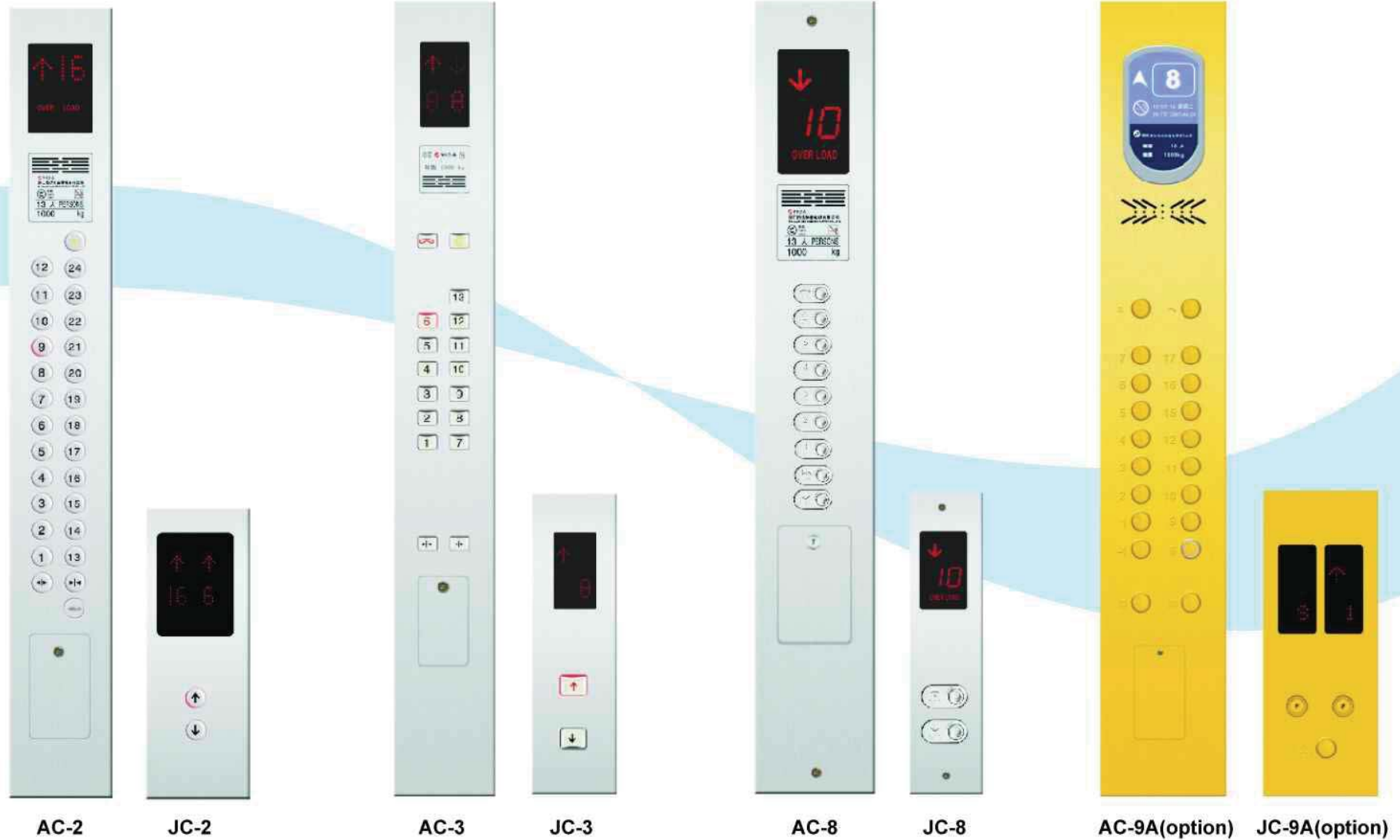
EX-HD003
Painted steel plate frame, circular ceiling lamp
in middle.



EX-HD004
Painted steel plate frame, circular ceiling
tubular light decoration.



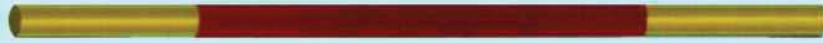
Car operation panel, hall operation panel



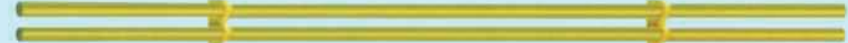
.The pictures are plotted by computer are likely somewhat different from the actual products.

Handrails, Floorings, Colours

Handrails are nice and convenient for use to give car much brilliant



YD-EF016



YD-EF018



YD-EF017



YD-EF9701

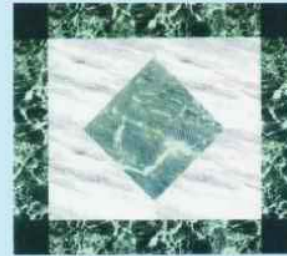
Floorings



YD-D001 PVC



YD-D002 PVC



YD-D003 PVC



EX-DB04 PVC

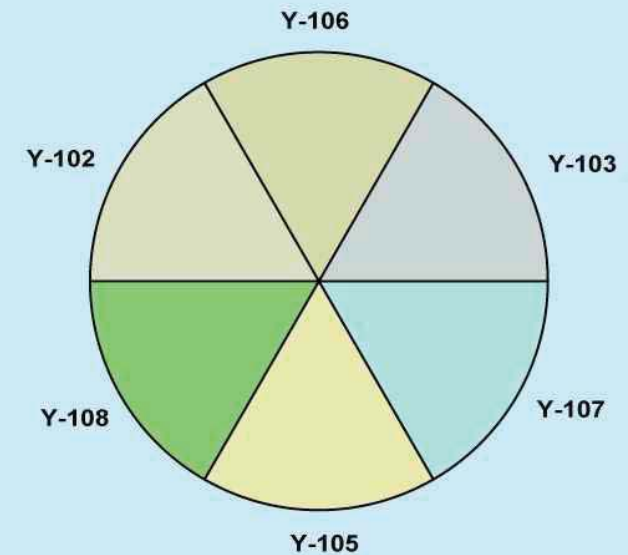


EX-DB05 PVC



EX-DB06 PVC

Colors optional



The pictures are plotted by computer are likely somewhat different from the actual products.

Cabin of freight elevator



YD-02 Standard style

Car top: Steel sheet,painted finish
Ventilation: Round fan
Car wall: Steel sheet,painted finish
Car door: Steel sheet, painted finish
Car bottom: Checker plate
Cop.Hop: Stainless panel



EX-H03

Ceiling:Hairline stainless steel
Car wall:Hairline stainless steel
Illumination:Energy-saving light
Car door:Hairline stainless steel
Flooring:Checker plate

The pictures are plotted by computer are likely somewhat different from the actual products.

Cabin of automobile elevator

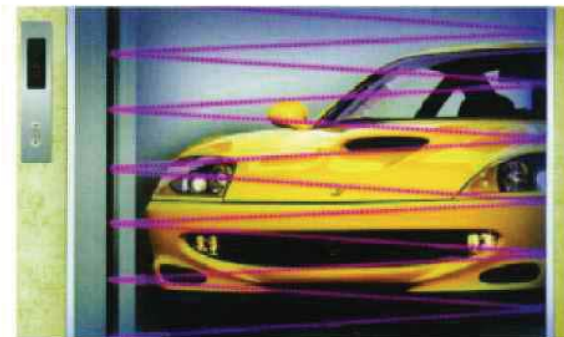
Fast Safe

Concord

19-20



FUJI YIDA



Automobile Elevator standard style

- Car top: Steel sheet,painted finish
- Ventilation: Round fan
- Car wall: Steel sheet,painted finish
- Car door: Steel sheet, painted finish
- Car bottom: Checker plate
- Cop.Hop: Stainless panel

The pictures are plotted by computer are likely somewhat different from the actual products.

Hydraulic elevator

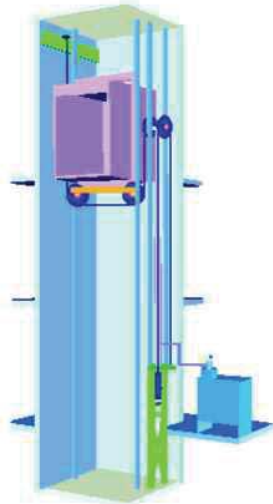


The advantageous performances

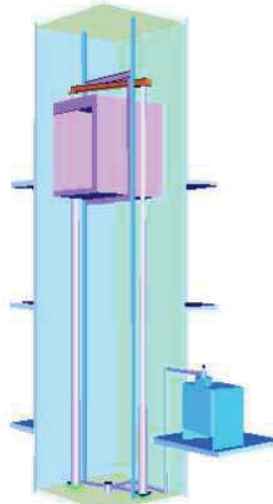
- Safety and reliability
- The top machine room is unnecessary
- Accurate floor-leveling
- Running in low noise
- With a lower top floor
- No vertical load on building

Diversified elevation modes

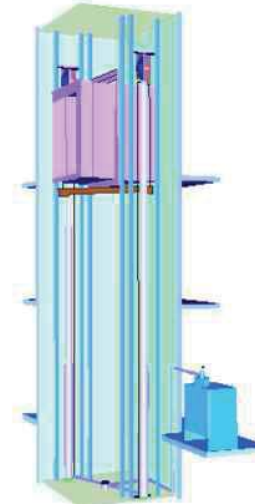
Single-cylinder side-placement
type 4:2



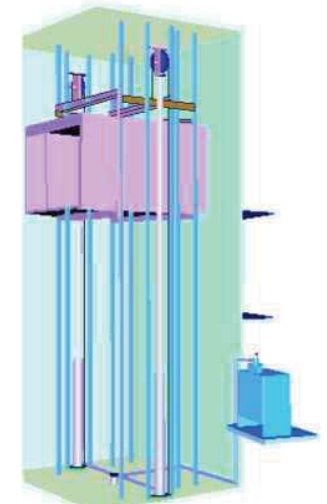
Double-cylinder side-placement
directly push type 1:1



Double-cylinder side-placement
type 2:1



Double-cylinder side-placement
6-track 2:1



Landing door

Fast Safe Concord

21-22

 FUJI YIDA

It is equipped with the multi-category door-open modes.
It can meet the demands from various door-open widths.



2-panel side opening



3-panel side opening



4-panel center opening

The pictures are plotted by computer are likely somewhat different from the actual products.

Escalator series





In the busy and nervous metropolis,escalators hacc been grandly arranged in various large-size shopping centers and department stores.It is a space full of imagination. It draws the outline of a flowing scenery with extraordinary lines. The safe, attrcative and comfortable escalator lets the people fully enjoy this leisure and pleasant moment. Whereas these are what you want to see about the satisfaction expectation from the customers towards your service. It will finally fulfill your max. Profit through your own excellent service.



IT IS SUMPTUOUS. STEADY, ELEGANT, SMOOTH



Moving walk series

In modern metropolis, in the public transport occasions such as large-size supermarket, public architecture, airport, exhibition center, transport change-over station and so forth, moving walk can not only satisfy the transport problem of extremely large flow of passengers. What is more, people can feel at ease in long-distance walk, transporting luggage van, baby cart, shopping cart, handicapped. Vehicle etc. It is greatly convenient for the travel and shopping of the public. Its easy, safe and pleasant riding requirements centers, transport change-over stations.

It is more like art! "FUJI-YIDA" moving walks have been extensively used in various shopping centers, bus stations, wharfs, aviation ports, recreation centers, exhibition halls and so on. They are practical, harmonious and comfortable.

FINE COZINESS FINE SAFETY AND RELIABILITY



- The timeless design blends in harmoniously with any architectural interior.
- FUJI-YIDA's commitment to passenger safety never wavers.
- FUJI-YIDA's superior quality comes from the finest engineering design and quality components.
- If the name of the game is efficiency, FUJI-YIDA easily fulfills the highest expectations.
- FUJI-YIDA offers better value by providing optimum performance at a reasonable price.

Intellectual design

Fast Safe Concord 25-26

FUJI YIDA

Table type traction machine

It has the smooth engagement and the frictional reduction. It guarantees the extremely low noise. It can reduce more than 60% of the noise. Compared with the traditional worm wheel drive, it has the higher driving efficiency.



Step chain-toller inbuilt

The roller has been internally installed in the specially-designed roller step chain. It can effectively fulfill the reduction of the noise during the driving process and bring about a more smooth and quiet operation.



Automatic oiling

PLC control automatic oiling and lubricating system fulfills the ideal automatic lubricating to the transmission chain during the running process of the escalator, it not only reduces the daily repair and maintenance work load, but also prolongs the service life of the driving mechanism.



Handrail inlet

The escalator is richly endowed with the intelligence and popularity by the novel, distinctive, elegant, tensile and modernized streamline handrail inlet and outlet design model. It appears to be more beautiful in the outer appearance. It displays the nobleness and imposing manner of the conveying constructions.



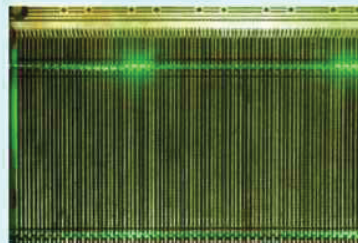
Inclined handrail

It adopts the stainless steel enclosed and inclined handrail. It is fit for the occasions with the large stream of people, heavy loading. It is also applicable for the public traffic and transport places. It can extend the riding space to the greatest extent and increase the effective safety coefficient when these is the large flow of people.



Step lamp

The green fluorescent lamp has been installed under the upper and lower step tread. When there is the staggering running of two connecting steps, the green fluorescent light will be sent out from the step teeth in order to help the passengers identify the step inlet and outlet horizontal section and enhance the riding safety.



Fault display

When some defect takes place, the trouble code will be displayed in the defect screen. It shows accurate trouble position effectively within the shortest time possible. In this way, it greatly enhances the repair and maintenance efficiency.



Running direction indication

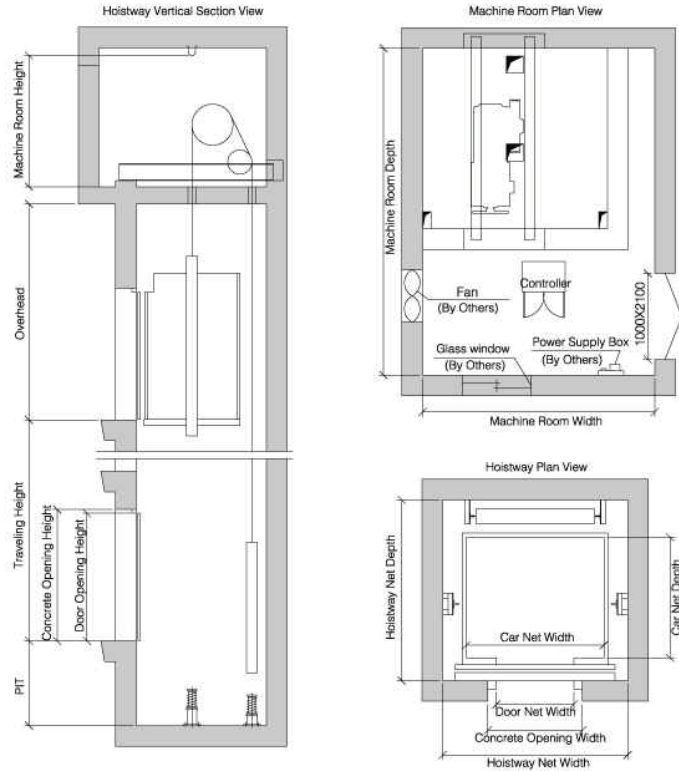
The running direction and forbidden display mark have been placed in the inlet and outlet of the handrail. The obvious running or forbidden instruction ensures the safe riding of the passengers with great ease.



PASSENGER ELEVATOR SERIES

CONSTRUCTION PARAMETERS

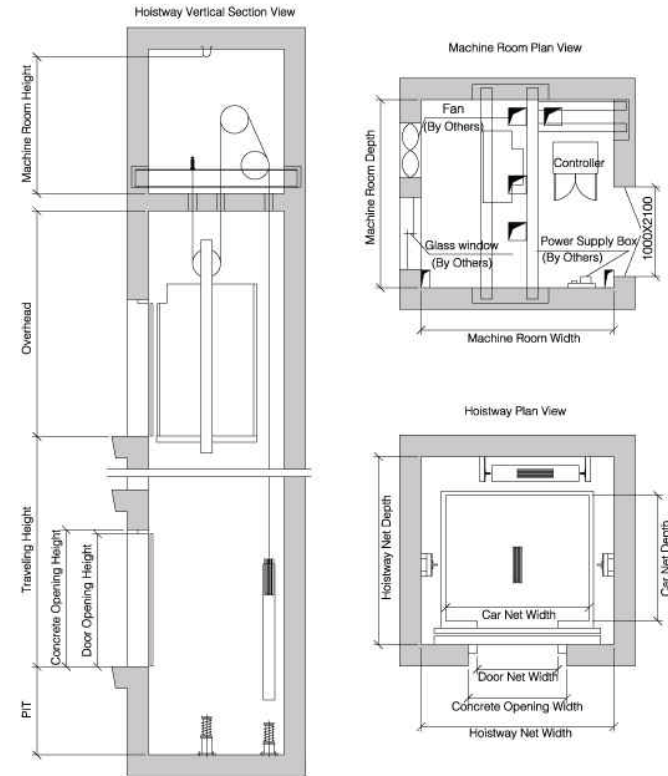
Passenger elevator (Geared Machine)



Capacity Kg	No. of Persons	Speed(m/s)	Entrance (W×H)mm center opening	Car net size (W×D)mm	Shaft dimension			Machine room size (W×D×H)mm
					(W×D)	PP	OH	
450	6	1.0	700 × 2100	1150 × 1100	1700 × 1800	1400	4200	2200 × 3600 × 2500
		1.5/1.75				1600	4400	
630	8	1.0	800 × 2100	1300 × 1250	1850 × 1900	1400	4200	2400 × 3600 × 2500
		1.5/1.75				1600	4400	
800	10	1.0	800 × 2100	1500 × 1300	2050 × 1950	1400	4200	2600 × 3800 × 2500
		1.5/1.75				1600	4400	
1000	13	1.0	900 × 2100	1600 × 1500	2150 × 2150	1400	4200	2800 × 4000 × 2500
		1.5/1.75				1600	4400	
1250	16	1.0	1000 × 2100	1750 × 1600	2300 × 2250	1400	4200	3000 × 4200 × 2500
		1.5/1.75				1600	4400	
1600	21	1.0	1100 × 2100	2050 × 1700	2600 × 2450	1400	4200	3300 × 4500 × 2500
		1.5/1.75				1600	4400	

The schematic drawing of civil work is for reference only.

Compact machine room passenger elevator (Gearless Machine)



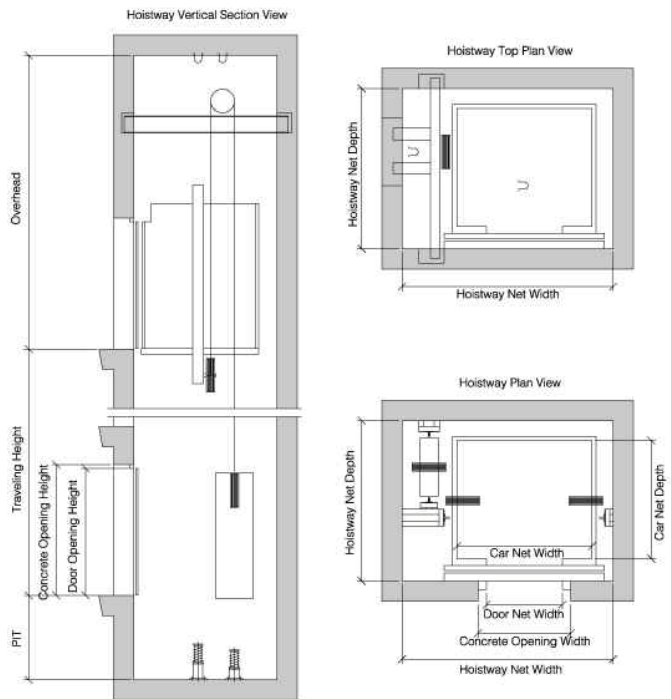
Capacity Kg	No. of Persons	Speed(m/s)	Entrance (W×H)mm center opening	Car net size (W×D)mm	Shaft dimension			Machine room size (W×D×H)mm
					(W×D)	PP	OH	
450	6	1.0	700 × 2100	1150 × 1100	1700 × 1800	1400	4200	1700 × 1800 × 2500
		1.5/1.75				1600	4400	
630	8	1.0	800 × 2100	1300 × 1250	1850 × 1950	1400	4200	1850 × 1950 × 2500
		1.5/1.75				1600	4400	
800	10	1.0	800 × 2100	1500 × 1300	2050 × 2000	1400	4200	2050 × 2000 × 2500
		1.5/1.75/2.0				1600	4600	
1000	13	1.0	900 × 2100	1600 × 1500	2150 × 2200	1400	4200	2150 × 2200 × 2500
		1.5/1.75/2.0				1600	4600	
1250	16	1.0	1000 × 2100	1750 × 1600	2300 × 2050	1400	4200	2700 × 2050 × 2500
		1.5/1.75/2.0				1600	4600	
1600	21	1.0	1100 × 2100	2050 × 1700	3000 × 2150	1400	4200	3000 × 2150 × 2500
		1.5/1.75/2.0				1600	4400	
		2.5				1800	4800	

Note: The company additionally offers the construction layout drawings of 3.0m/s, 3.5m/s, 4.0m/s speed.

The schematic drawing of civil work is for reference only.



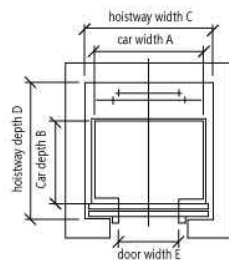
Machine roomless (MRL) passenger elevator



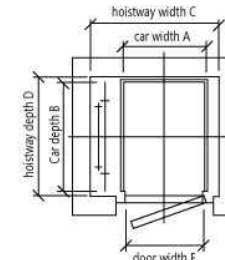
Capacity Kg	No. of Persons	Speed(m/s)	Entrance (W x H)mm center opening	Car net size (W x D)mm	Shaft dimension (W x D)		
					PP	OH	
450	6	1.0	700 x 2100	1100 x 1150	2000 x 1700	1500	4200
		1.5/1.75			1700	4400	
630	8	1.0	800 x 2100	1300 x 1250	2200 x 1800	1500	4200
		1.5/1.75			1700	4400	
800	10	1.0	800 x 2100	1450 x 1350	2350 x 1850	1500	4200
		1.5/1.75			1700	4400	
1000	13	1.0	900 x 2100	1600 x 1500	2500 x 1950	1500	4200
		1.5/1.75			1700	4400	
1250	16	1.0	1000 x 2100	1750 x 1600	2800 x 2050	1600	4200
		1.5/1.75			1800	4400	
1600	21	1.0	1100 x 2100	2050 x 1700	3100 x 2150	1600	4200
		1.5/1.75			1800	4400	

The schematic drawing of civil work is for reference only.

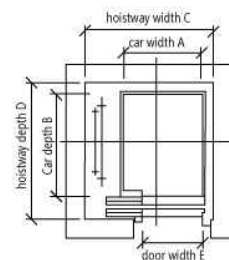
Villa elevator



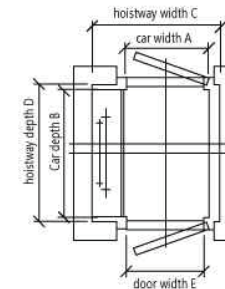
Rated Load	A (mm)	B (mm)	C (mm)	D (mm)	E (mm)	Pit (mm)	Overhead (mm)
250KG	1100	900	1400	1500	600	400	3200
320KG	1200	900	1450	1500	600	400	3200



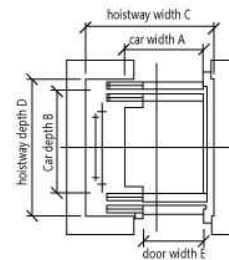
Rated Load	A (mm)	B (mm)	C (mm)	D (mm)	E (mm)	Pit (mm)	Overhead (mm)
250KG	900	1200	1500	1350	900	400	3200
320KG	900	1300	1500	1450	900	400	3200



Rated Load	A (mm)	B (mm)	C (mm)	D (mm)	E (mm)	Pit (mm)	Overhead (mm)
250KG	900	1200	1450	1550	700	400	3200
320KG	900	1300	1450	1650	700	400	3200



Rated Load	A (mm)	B (mm)	C (mm)	D (mm)	E (mm)	Pit (mm)	Overhead (mm)
250KG	900	1200	1500	1270	900	400	3200
320KG	900	1300	1500	1370	900	400	3200



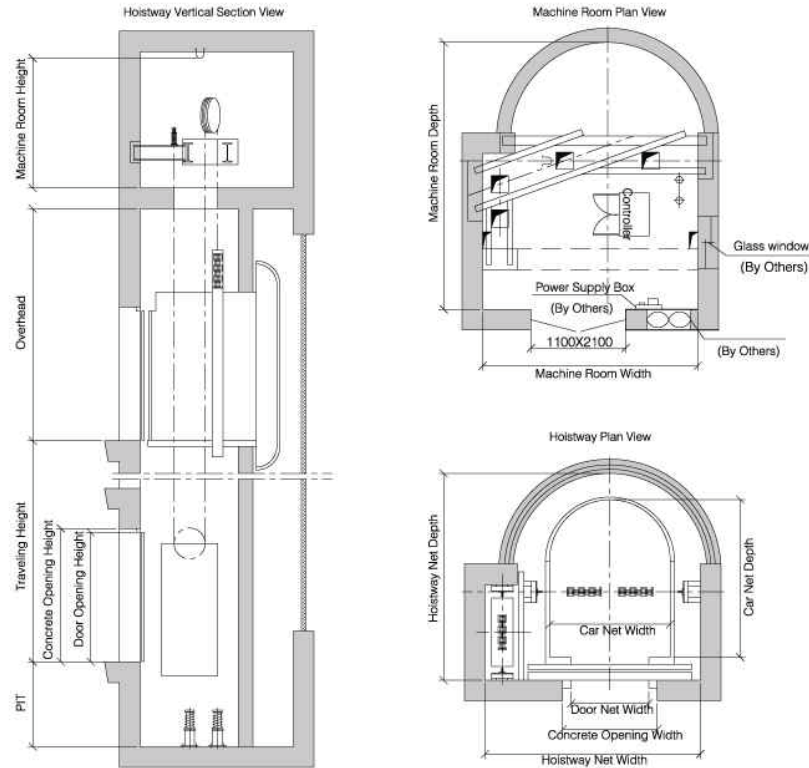
Rated Load	A (mm)	B (mm)	C (mm)	D (mm)	E (mm)	Pit (mm)	Overhead (mm)
250KG	900	1200	1450	1690	700	400	3200
320KG	900	1300	1450	1790	700	400	3200

Note:1.The elevator meets standard GB/T21739-2008.
2.If hoistway steel structure or three-entrance is required,Another design.

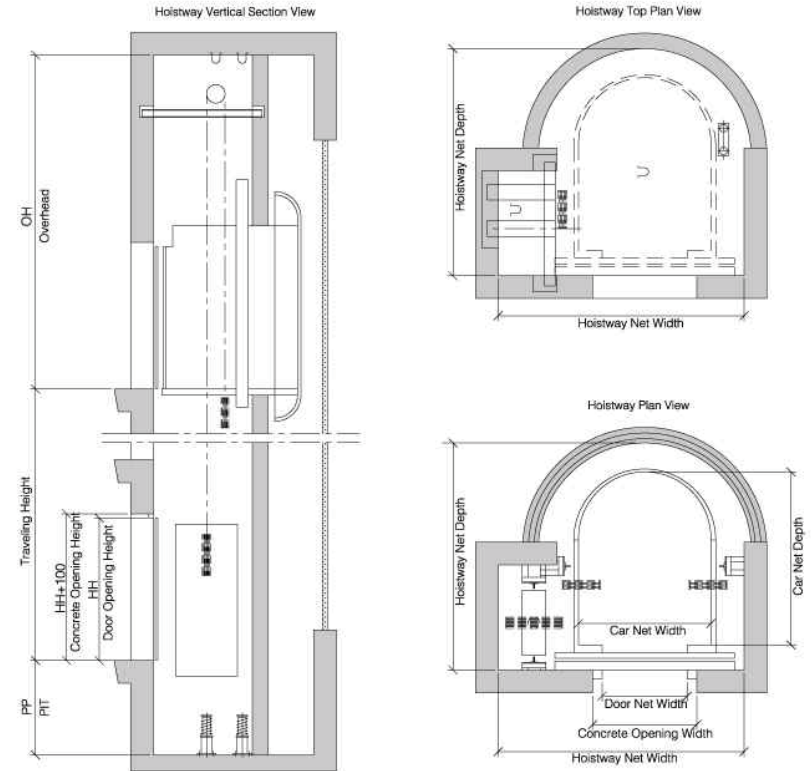
PANORAMIC ELEVATOR SERIES

CONSTRUCTION PARAMETERS

Compact machine room panoramic elevator (Gearless Machine)



Machine roomless (MRL) panoramic elevator



Kg	No. of Persons	Speed(m/s)	Entrance (W×H)mm		Car net size (W×D)mm	Shaft Net Size (W×D)		Machine room size (W×D×H)mm
			Center Opening	PP		OH		
630	8	1.0	800 × 2100	1100 × 1600	2250 × 2100	1800	4800	2250 × 2800 × 2500
		1.5/1.75				2000	5000	
800	10	1.0	800 × 2100	1200 × 1700	2350 × 2200	1800	4800	2350 × 3000 × 2500
		1.5/1.75				2000	5000	
1000	13	1.0	900 × 2100	1400 × 1800	2500 × 2300	1800	4800	2500 × 3200 × 2500
		1.5/1.75				2000	5000	
1250	16	1.0	1000 × 2100	1600 × 1950	2500 × 2450	1800	4800	2500 × 3200 × 2500
		1.5/1.75				2000	5000	
1600	21	1.0	1000 × 2100	1800 × 2150	2850 × 2650	1800	4800	2500 × 3400 × 2500
		1.5/1.75				2000	5000	

The schematic drawing of civil work is for reference only.

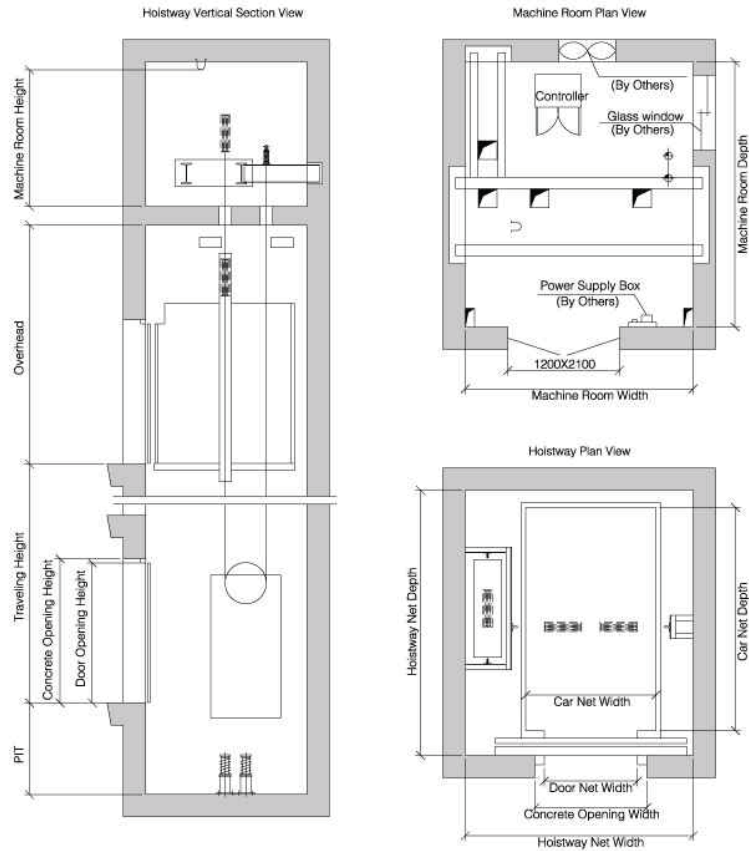
Kg	No. of Persons	Speed(m/s)	Entrance (W×H)mm		Car net size (W×D)mm	Shaft dimension (W×D)	
			Center Opening	PP		OH	
630	8	1.0	700 × 2100	1100 × 1600	2150 × 2100	1800	4800
		1.5/1.75				2000	5000
800	10	1.0	800 × 2100	1200 × 1700	2400 × 2200	1800	4800
		1.5/1.75				2000	5000
1000	13	1.0	900 × 2100	1400 × 1800	2600 × 2300	1800	4800
		1.5/1.75				2000	5000
1250	16	1.0	900 × 2100	1600 × 1950	2650 × 2450	1800	4800
		1.5/1.75				2000	5000
1600	21	1.0	900 × 2100	1800 × 2150	2900 × 2650	1800	4800
		1.5/1.75				2000	5000

The schematic drawing of civil work is for reference only.

BED ELEVATOR SERIES

CONSTRUCTION PARAMETERS

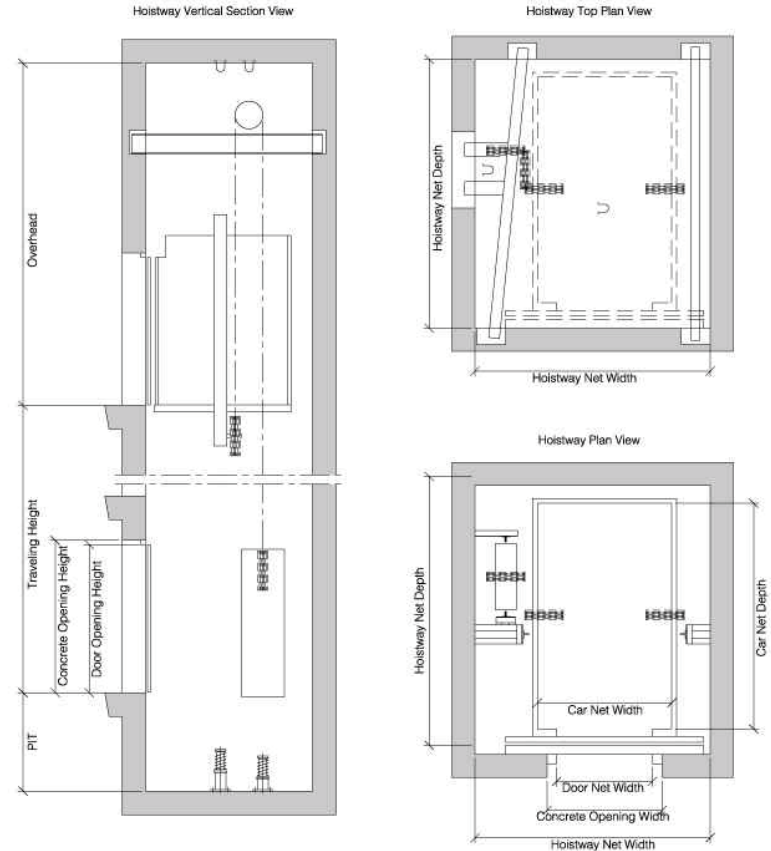
Bed elevator (Gearless Machine)



Capacity kg	No. of Persons	Speed m/s	Door Open Type	Entrance (W×H)mm	Car Net Size (W×D)mm	Shaft Net Size			Machine Room Net Size W×D×H
						(W×D)	PP	OH	
1600	21	1.0	Center Opening	1000 × 2100	1400 × 2400	2450 × 2850	1400	4200	2450 × 2850
		1.5/1.75					1600	4400	
		1.0	Two Panel Side Oping			2350 × 2900	1400	4200	2350 × 2900
		1.5/1.75					1600	4400	

The schematic drawing of civil work is for reference only.

Machine roomless (MRL) bed elevator



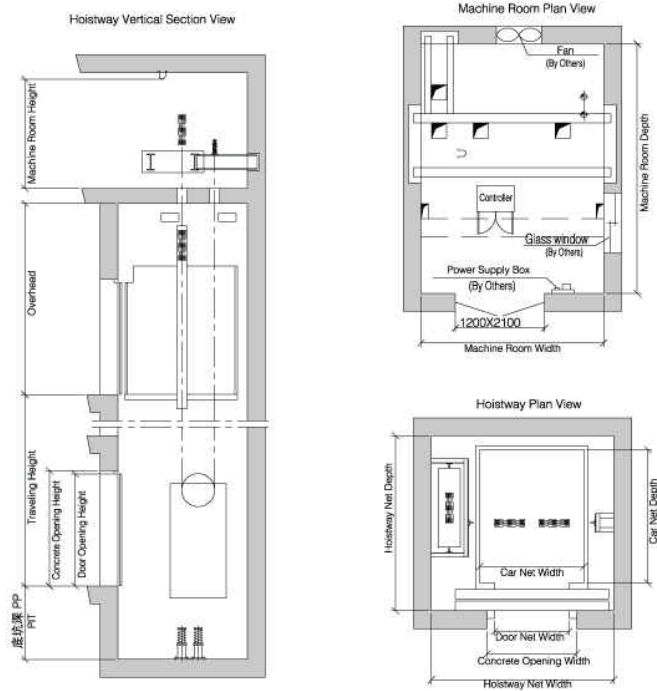
Capacity kg	No. of Persons	Speed m/s	Door Open Type	Entrance (W×H)mm	Car Net Size (W×D)mm	Shaft Net Size		
						(W×D)	PP	OH
1600	21	1.0	Center Opening	1000 × 2100	1400 × 2400	2550 × 2850	1600	4200
		1.5/1.75					1800	4400
		1.0	Two Panel Side Oping			2450 × 2900	1600	4800
		1.5/1.75					1800	4950

The schematic drawing of civil work is for reference only.

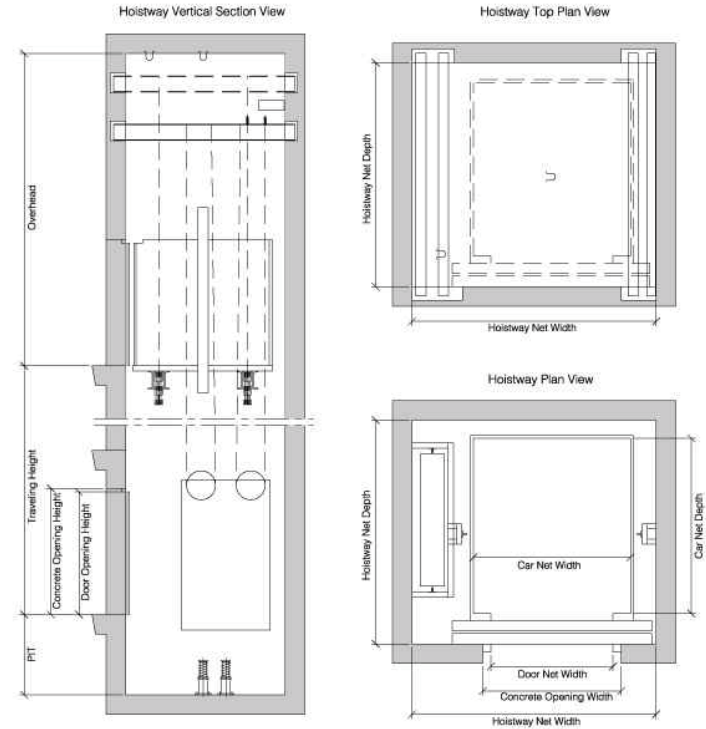
FREIGHT USES ELEVATOR SERIES

CONSTRUCTION PARAMETERS

Freight elevator (Geared Machine)



Machine roomless (MRL) freight elevator



Capacity kg	Speed m/s	Door Open type	Car door entrance	Entrance (W×H)mm	Car Net Size (W×D)mm	Shaft Net Size			Machine Room Net Size W×D×H
						(W×D)	PP	OH	
1000	0.5	Two Panel Side Opening	Single Door	1200 × 2100	1430 × 1650	2250 × 2150	1500	4500	2250 × 3200 × 2500
			Double Door		1430 × 1600				
1600		Two Panel Side Opening	Single Door	1500 × 2100	1830 × 1900	2800 × 2400			2800 × 3500 × 2500
			Double Door		1830 × 1850	2800 × 2550			
2000		Four Panel Center Opening	Single Door	1600 × 2100	1830 × 1900	2850 × 2450			2850 × 3500 × 2500
			Double Door		1830 × 1850	2850 × 2600			
		Two Panel Side Opening	Single Door		1930 × 2150	2950 × 2650			2950 × 3800 × 2500
			Double Door		1930 × 2100	2950 × 2800			
		Four Panel Center Opening	Single Door		1930 × 2150	3000 × 2700			3000 × 3800 × 2500
			Double Door		1930 × 2100	3000 × 2850			
3000	Four Panel Center Opening	Single Door	1800 × 2200	2230 × 2600	3400 × 3150	3400 × 4500 × 2500			
		Double Door		2230 × 2550	3400 × 3300				
4000	0.25	Four Panel Center Opening	Single Door	2000 × 2200	2530 × 2900	3750 × 3450	3750 × 4800 × 2500		
	0.5				Double Door	2530 × 2850		3750 × 3600	
5000	0.25	Four Panel Center Opening	Single Door	2400 × 2200	2830 × 3100	4200 × 3650	4200 × 5000 × 2500		
	0.5				Double Door	2830 × 3050		4200 × 3800	

Note: The company additionally offers the construction layout drawings of 1.0m/s, 1.5m/s speed.

The schematic drawing of civil work is for reference only.

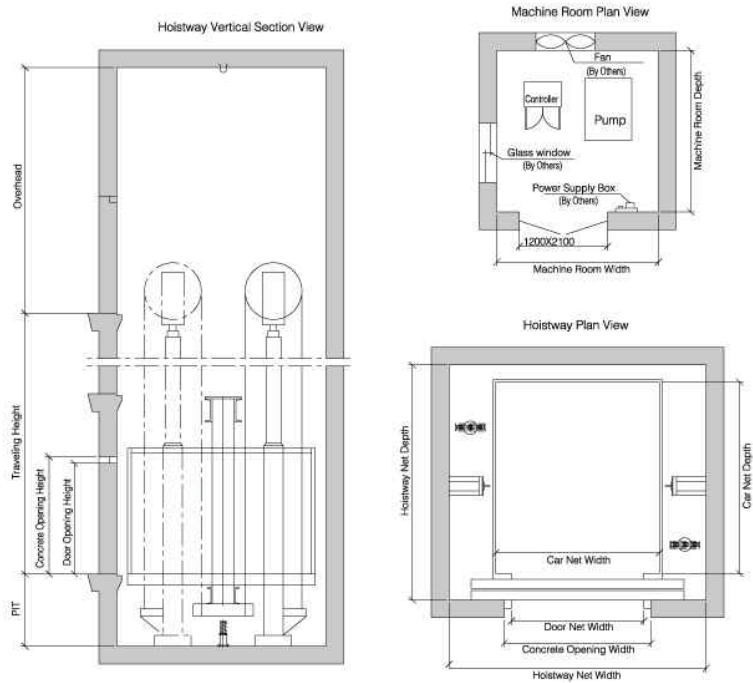
Capacity kg	Speed m/s	Door Open type	Entrance (W×H)mm	Car Net Size (W×D)mm	Shaft Net Size		
					(W×D)	PP	OH
1000	0.5	Two Panel Side Opening	1200 × 2100	1430 × 1650	2300 × 2150	1600	4800
1600	0.5	Two Panel Side Opening	1500 × 2100	1830 × 1900	2850 × 2400	1600	4800
		Four Panel Center Opening					
2000	0.5	Two Panel Side Opening	1600 × 2100	1930 × 2150	3050 × 2650	1600	4800
		Four Panel Center Opening					
3000	0.5	Four Panel Center Opening	1800 × 2200	2230 × 2600	3700 × 3150	1700	4500

The schematic drawing of civil work is for reference only.

FREIGHT USES ELEVATOR SERIES

CONSTRUCTION PARAMETERS

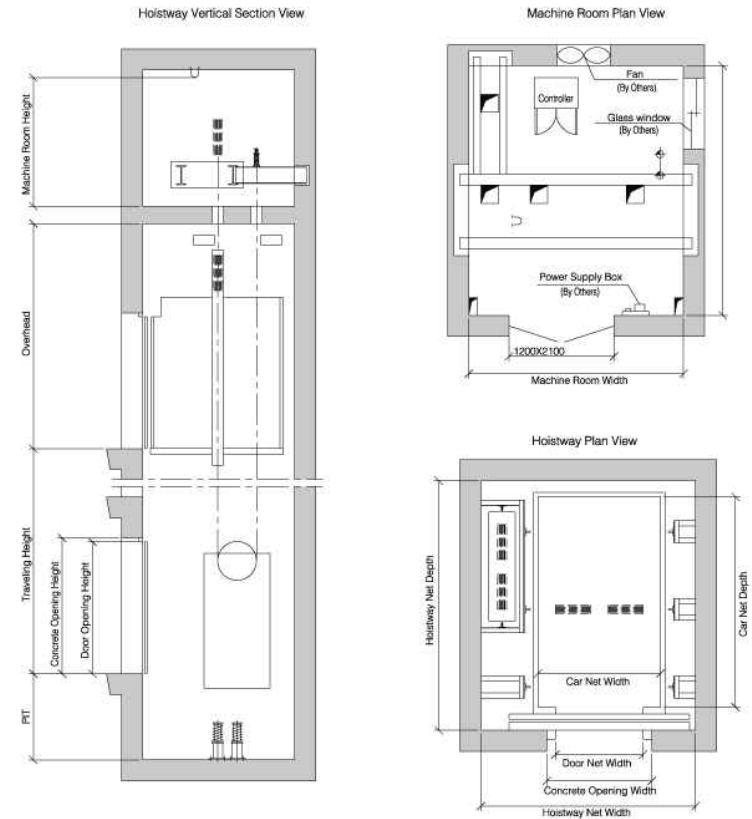
Hydraulic elevator



Capacity kg	Speed m/s	Door Open type	Car door entrance	Entrance (W×H)mm	Car Net Size (W×D)mm	Shaft Net Size			Machine Room Net Size W×D×H
						(W×D)	PP	QH	
1000	0.45	Two Panel Side Opening	Single Door	1200 × 2100	1430 × 1650	2350 × 2150	1500	4200	2200 × 2200 × 2200
			Double Door	1430 × 1600	2600 × 2270				
Two Panel Side Opening		Single Door	1500 × 2100	1830 × 1900	2900 × 2450				
		Double Door	1830 × 1850	2900 × 2550					
Four Panel Center Opening		Single Door	1500 × 2100	1830 × 1900	3000 × 2450				
		Double Door	1830 × 1850	3000 × 2600					
Two Panel Side Opening		Single Door	1600 × 2100	1930 × 2150	3000 × 2700				
		Double Door	1930 × 2100	3000 × 2800					
Four Panel Center Opening		Single Door	1600 × 2100	1930 × 2150	3100 × 2700				
		Double Door	1930 × 2100	3100 × 2850					
3000	Four Panel Center Opening	Single Door	1800 × 2200	2230 × 2600	3750 × 3150	2500 × 2500 × 2200			
		Double Door	2230 × 2550	3750 × 3300					
4000	Four Panel Center Opening	Single Door	2000 × 2200	2530 × 2900	4050 × 3450				
		Double Door	2530 × 2850	4050 × 3650					
5000	Four Panel Center Opening	Single Door	2400 × 2200	2830 × 3100	4600 × 3650				
		Double Door	2830 × 3000	4600 × 3800					

The schematic drawing of civil work is for reference only.

Automobile elevator



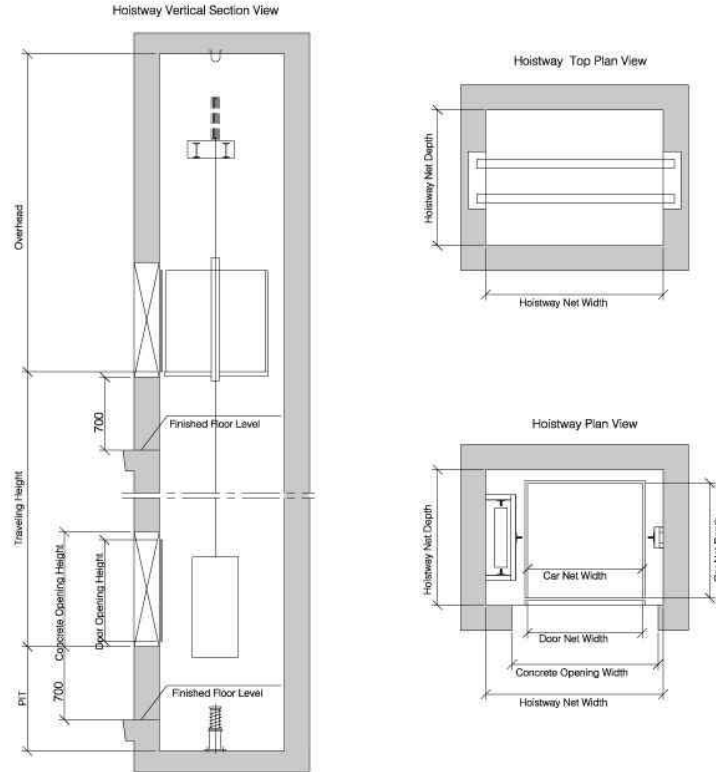
Capacity kg	Speed m/s	Door Open type	Car door entrance	Entrance (W×H)mm	Car Net Size (W×D)mm	Shaft Net Size			Machine Room Net Size W×D×H
						(W×D)	PP	QH	
3000	0.5	Four Panel Center Opening	Single Door	2300 × 2200	2500 × 5800	4000 × 6350	1600	4800	4000 × 6350 × 2500
			Double Door		2500 × 5750				4000 × 6500
4000	0.25	Four Panel Center Opening	Single Door	2400 × 2200	2900 × 6000	4300 × 6550	1600	4800	4300 × 6550 × 2500
			Double Door		2900 × 6000				4300 × 6750
5000	0.25	Four Panel Center Opening	Single Door	2600 × 2200	3200 × 6800	4650 × 7350	1600	4800	4650 × 7350 × 2500
			Double Door		3200 × 6800				4650 × 7550

The schematic drawing of civil work is for reference only.

FREIGHT USES ELEVATOR SERIES

CONSTRUCTION PARAMETERS

Dumbwaiter elevator

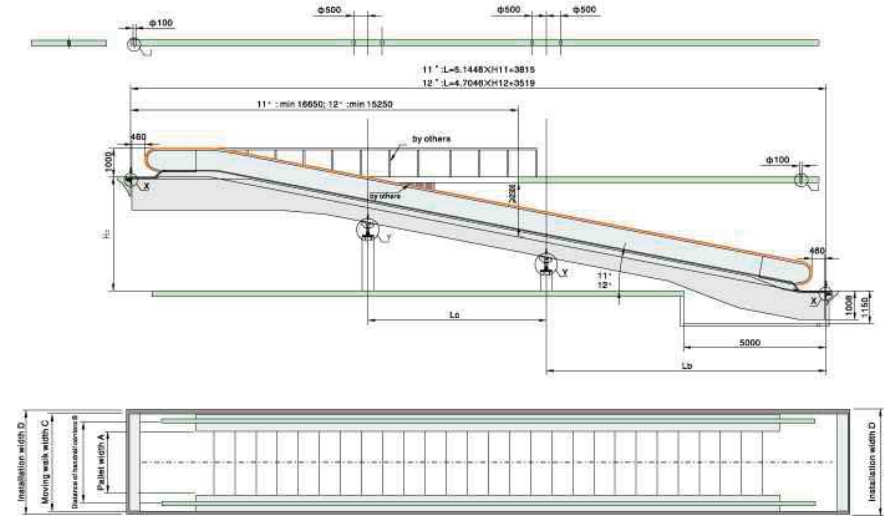


Capacity kg	Speed m/s	Entrance (J1 x H1)mm	Car door entrance	Car Net Size (W x D)mm	Shaft Net Size		
					(W x D)	PP	CH
100	0.4	800 x 800	Single Door	800 x 800	1350 x 1000	1000	3200
			Double Door		1350 x 940		
200		1000 x 1000	Single Door	1000 x 1000	1550 x 1200	1000	3200
			Double Door		1550 x 1140		
250	1100 x 1100	Single Door	1100 x 1100	1650 x 1300	1100	3300	
		Double Door		1650 x 1240			

The schematic drawing of civil work is for reference only.

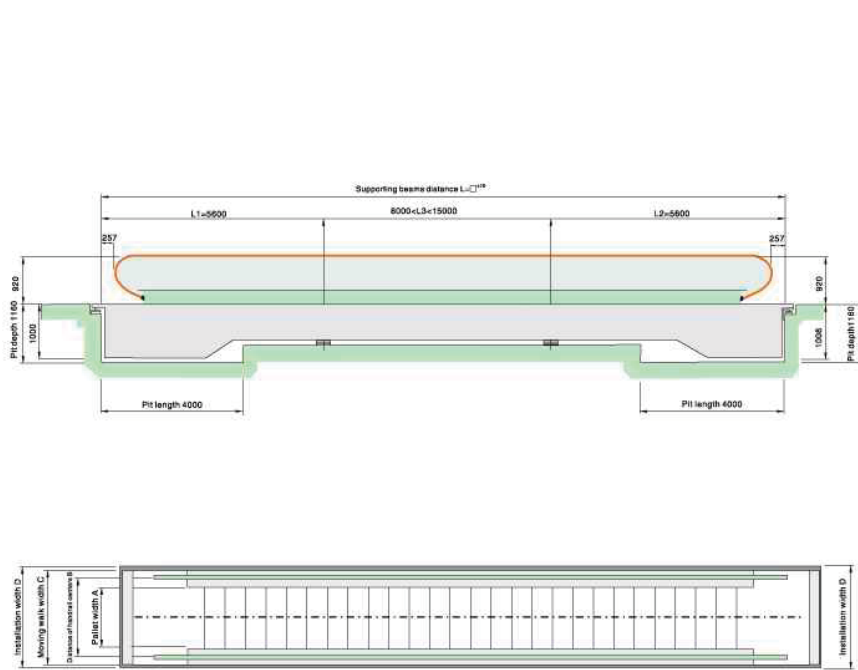
ESCALATOR/MOVING WALK SERIES

CONSTRUCTION PARAMETERS



Model	Travelling length	Rated speed	Rated load capacity	Inclination	Motor power	A(mm)	B(mm)	C(mm)	D(mm)
ER-80/12'	2500 ≤ H ≤ 4500	0.5	6750	12	7.5	800	1036	1400	≥1480
	4600 ≤ H ≤ 6000				11				
	2500 ≤ H ≤ 4500	0.65	8775		11				
	4600 ≤ H ≤ 6000				15				
ER-100/12'	2500 ≤ H ≤ 3500	0.5	9000	12	7.5	1000	1236	1600	≥1680
	3600 ≤ H ≤ 6000				11				
	2500 ≤ H ≤ 3500	0.65	11700		11				
	3600 ≤ H ≤ 6000				15				

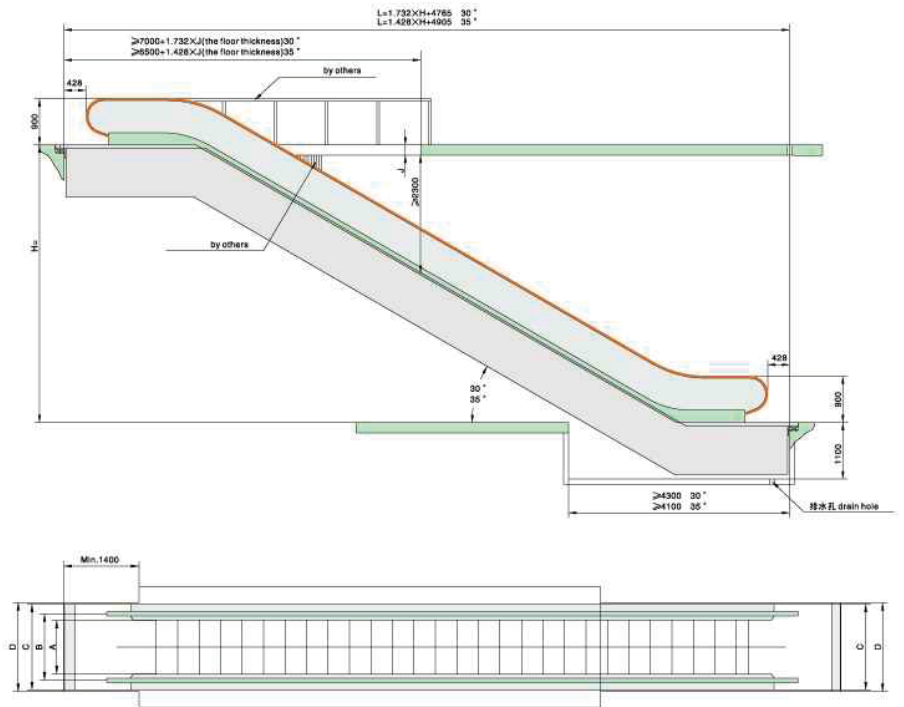
The schematic drawing of civil work is for reference only.



The schematic drawing of civil work is for reference only

Model	Travelling length	Rated speed	Rated load capacity	Inclination	Motor power	A(mm)	B(mm)	C(mm)	D(mm)
ER-80/0° - 6°	L ≤ 16000	0.5	6750	0-6	5.5	800	1038	1400	▽1460
	16000 ≤ L ≤ 20000				8				
	20000 ≤ L ≤ 30000				11				
ER-100/0° - 6°	L ≤ 12000	0.5	9000	0-6	5.5	1000	1238	1600	▽1660
	12000 ≤ L ≤ 15000				8				
	15000 ≤ L ≤ 30000				11				

The schematic drawing of civil work is for reference only.



Model	Travelling height	Rated speed	Rated load capacity	Inclination	Flat step num	Motor power	A(mm)	B(mm)	C(mm)	D(mm)
EF30A-60	3000 ≤ H ≤ 6000	0.5	4500	30	2	5.5	600	838	1200	▽1260
	3000 ≤ H ≤ 4000					5.5				
EF30A-80	4000 ≤ H ≤ 6000	0.5	6750	30	2	7.5	800	1038	1400	▽1460
	3000 ≤ H ≤ 4700					7.5				
EF30A-100	4700 ≤ H ≤ 6000	0.5	9000	30	2	11	1000	1238	1600	▽1660
EF35A-60	3000 ≤ H ≤ 6000	0.5	4500	35	2	5.5	600	838	1200	▽1260
	3000 ≤ H ≤ 4700					5.5				
EF35A-80	4700 ≤ H ≤ 6000	0.5	6750	35	2	7.5	800	1038	1400	▽1460
	3000 ≤ H ≤ 3800					5.5				
EF35A-100	3900 ≤ H ≤ 5000	0.5	9000	35	2	7.5	1000	1238	1600	▽1660
	5000 ≤ H ≤ 6000					11				

The schematic drawing of civil work is for reference only.



ZHEJIANG YIDA EXPRESS ELEVATOR CO.,LTD

ADD: 8 Yida Ave.Nanxun District,Huzhou City Zhejiang Nanxun Economical Development Zone
Tel:0086-572- 3062927
Fax: 0086-572-3062262
Http: www.ydelevator.com E-mail: Alex@ydelevator.com
